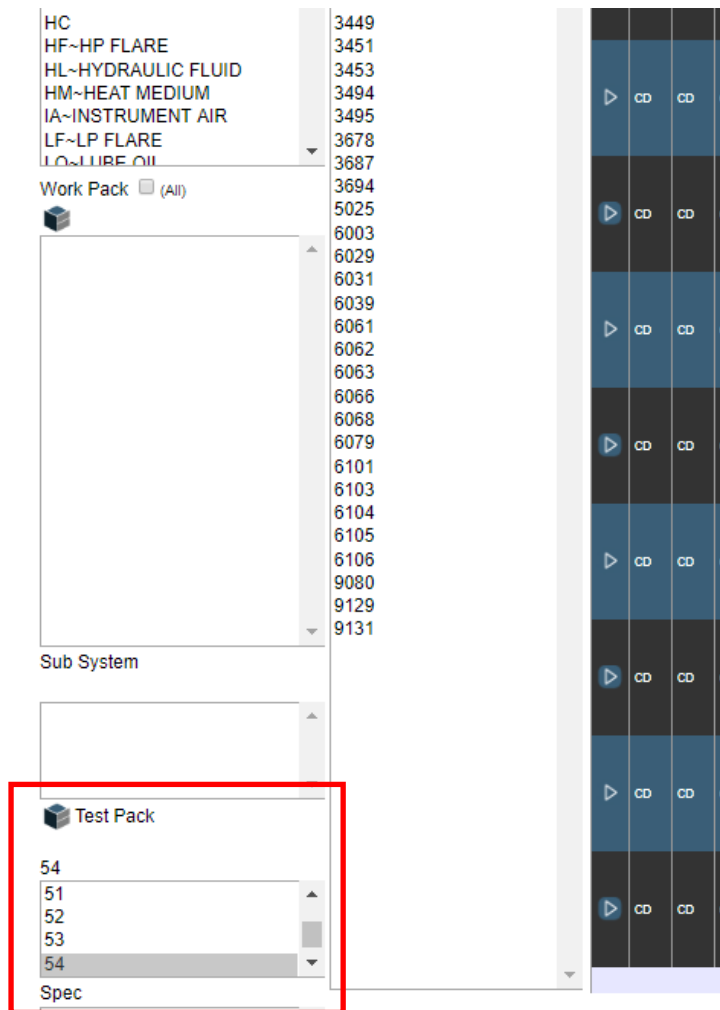


MODEL CREATION AND UPLOAD



On Computer




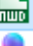

Login into VMLIVE and go into JI.

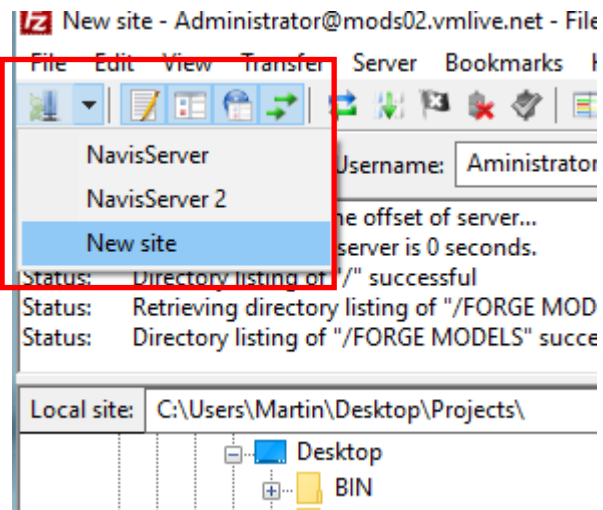
Login in to VMLITE and let the model load.

Now back in VMLIVE select the Leak Test you want to convert and let it filter to all the joints. When they are displayed click on the Cube next to Test Pack. This will now set VMLITE off converting the files we need.

The files will then be visible inside the VMLITE Folder in the OBJ folder.

Open Navis and drag the .3ds file into it and save it as an NWD file.

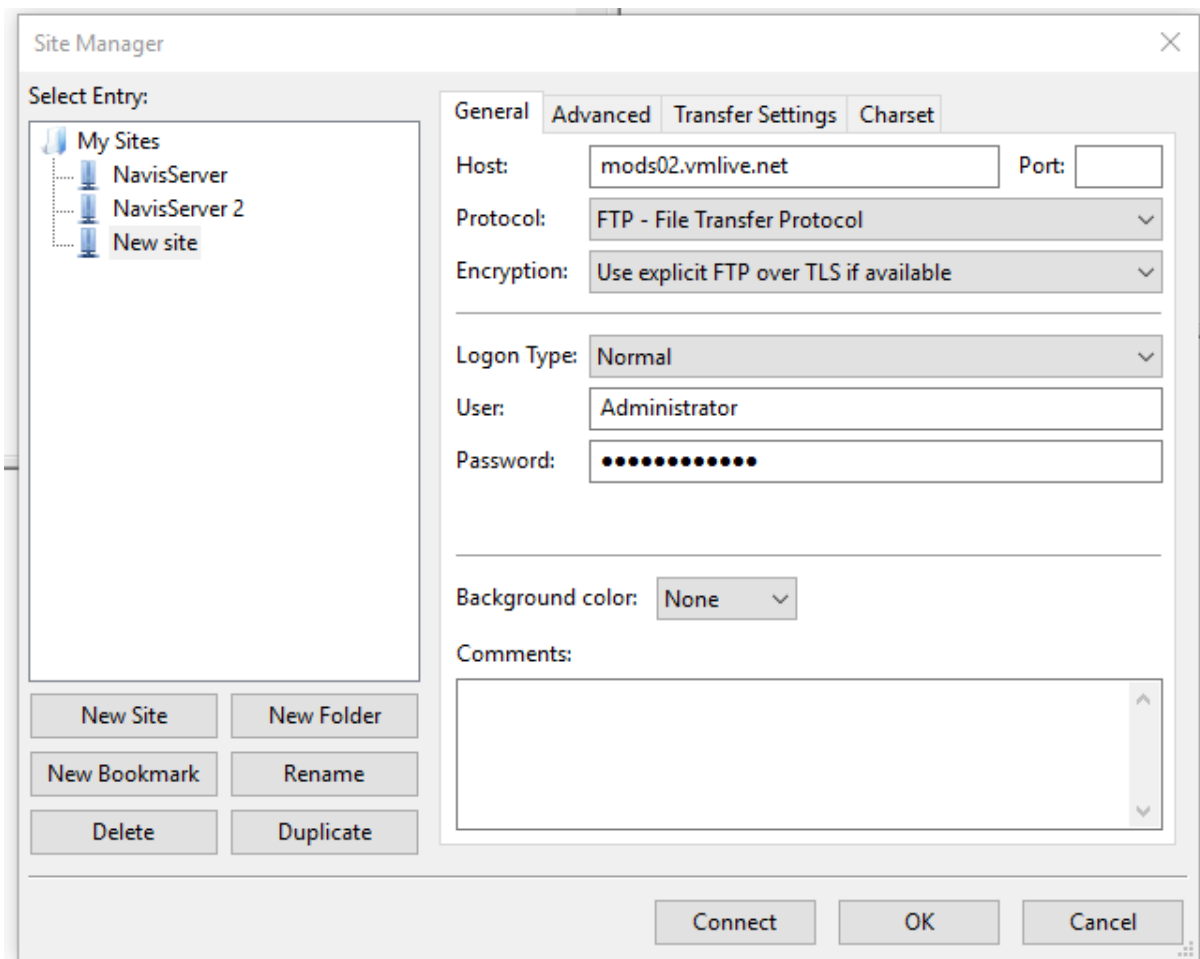
	40.3ds	14/03/2019 14:46	3DS File	3,148 KB
	40.mtl	14/03/2019 14:46	MTL File	16 KB
	40	14/03/2019 14:48	Navisworks Cache	308 KB
<input checked="" type="checkbox"/> 	40	14/03/2019 14:49	Navisworks Docu...	223 KB
	40	14/03/2019 14:46	OBJ File	11,907 KB



Open FileZilla and select New site and the Site Manager will pop up (below). Make sure the Protocol and Encryption are as below.

User Administrator

Password ABZForge2019



Select the FORGE MODELS and drop the NWD just created for the Leak Test in there.

File Edit View Transfer Server Bookmarks Help New version available!

Host: mod02.vmlive.net Username: Administrator Password: ***** Port: Quickconnect

Status: Connection established, waiting for welcome message...
Status: Installing TLS...
Status: Verifying certificate...
Status: TLS connection established.
Status: Logged in

Local site: C:\Users\Martin\Desktop\Projects Remote site: /

Filename Filesize Filetype Last modified Permission

barcode		File folder	13/03/2016 13:38:00	
FORGE MODELS		File folder	13/03/2019 15:43:00	
models.autodesk.io		File folder	10/05/2017 20:29:00	
SQL Backups		File folder	01/12/2016 13:00:00	
SSL		File folder	13/06/2016 19:40:00	
www.vmlive.net		File folder	22/11/2016 16:07:00	
CGPillMaster.mwd	182,380,037	Naviswork...	22/05/2017 13:21:00	
cheron.mwd	16,681,957	Naviswork...	10/05/2017 20:15:00	
Honeywell.mwd	2,724,721	Naviswork...	27/09/2016 10:09:00	
Honeywell1 - Copy.mwd	2,724,721	Naviswork...	27/09/2016 19:21:00	
Honeywell1.mwd	2,724,721	Naviswork...	27/09/2016 19:21:00	
Kakias.mwd	147,855,147	Naviswork...	29/09/2016 11:27:00	
LINGS.mwd	164,946,942	Naviswork...	05/12/2017 19:32:00	
Magnus.mwd	1,885,948	Naviswork...	09/03/2019 19:19:00	
MODSTraining.mwd	16,681,957	Naviswork...	10/05/2017 20:22:00	
OutageScope1.mwd	3,896,216	Naviswork...	15/06/2017 14:15:00	

2 files and 13 directories. Total size: 3,840,314,566 bytes

Server/Local File Direction Remote file Size Priority Status

Filename Filesize Filetype Last modified Permi

39.nwd	202,957	Naviswork...	14/03/2019 12:56:00	
40.nwd	227,567	Naviswork...	14/03/2019 14:50:00	
4A.nwd	3,350,564	Naviswork...	14/03/2019 12:56:00	
4B.nwd	3,082,540	Naviswork...	14/03/2019 13:11:00	
4C.nwd	3,170,153	Naviswork...	14/03/2019 13:41:00	
50.nwd	1,911,784	Naviswork...	13/03/2019 15:43:00	
54.nwd	1,531,391	Naviswork...	14/03/2019 12:56:00	
Magnus.nwd	1,854,001	Naviswork...	14/03/2019 11:27:00	

6 files Total size: 15,330,067 bytes

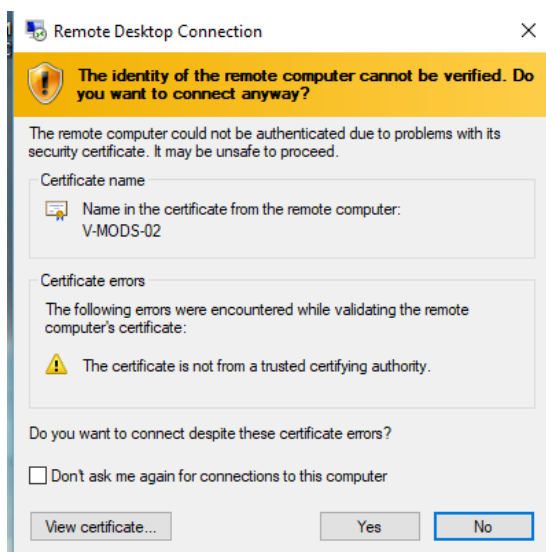
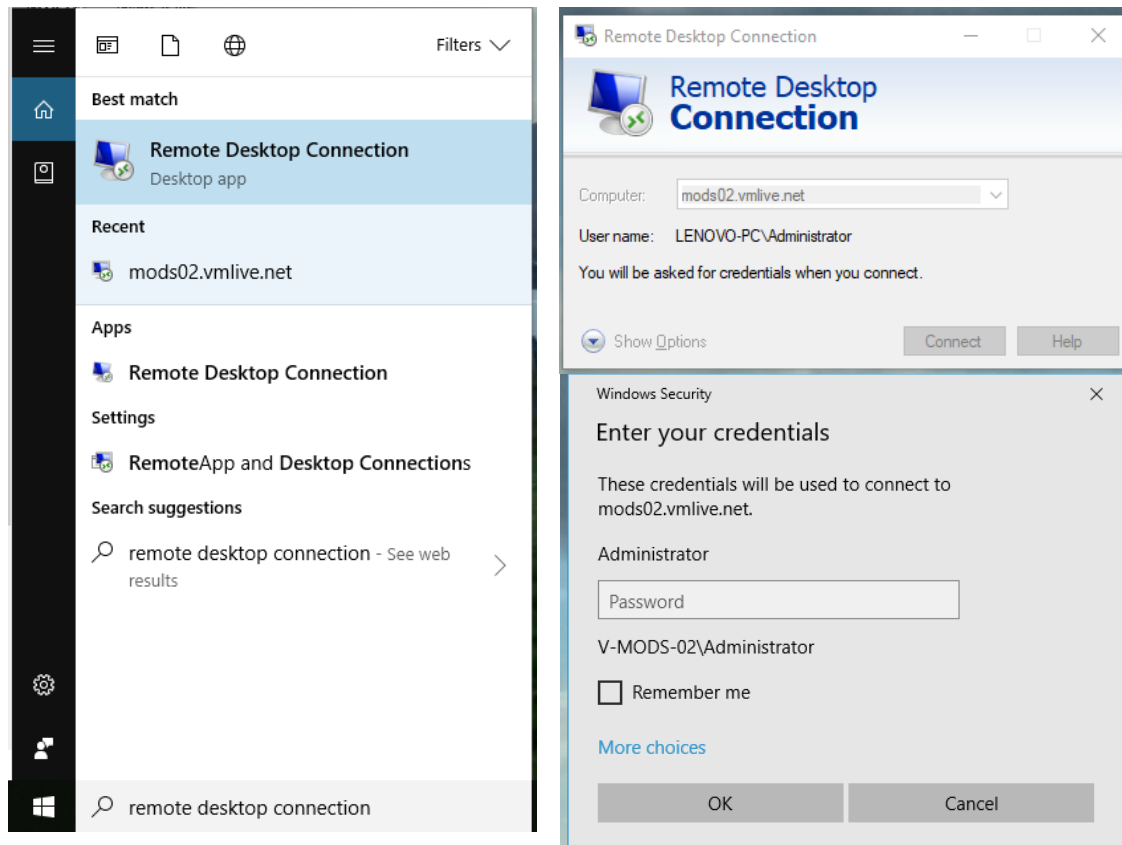
Remote Server

To get access to the remote desktop type in REMOTE DESKTOP CONNECTION in the search and open it.

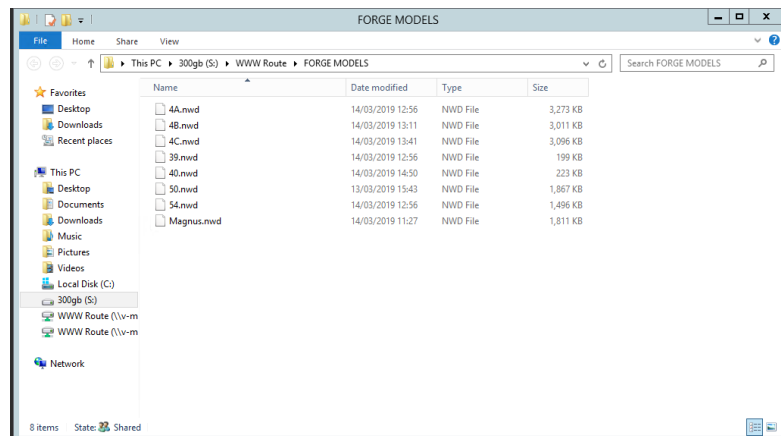
Computer mods02.vmlive.net

Password ABZForge2019

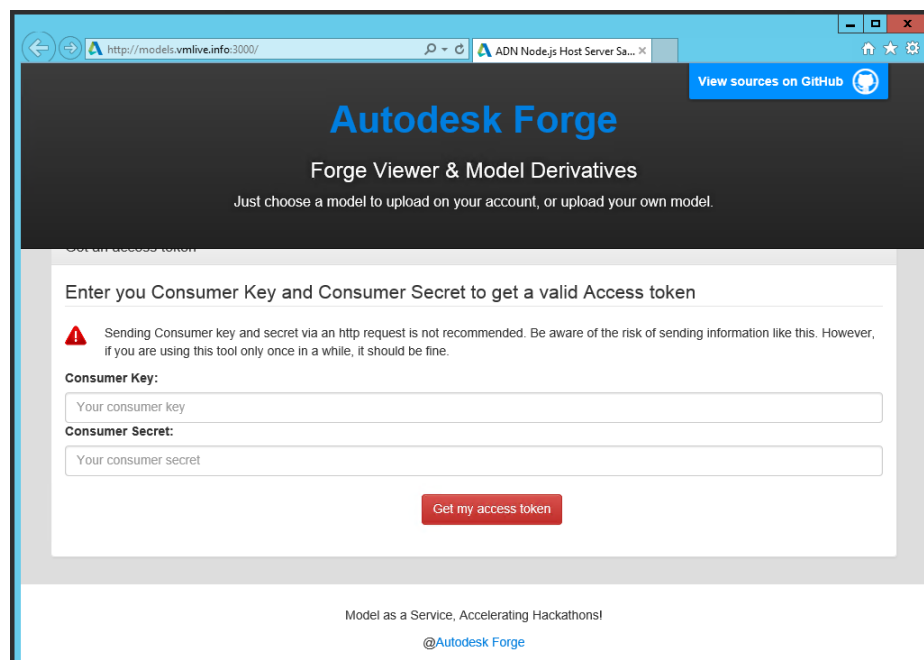
Select YES



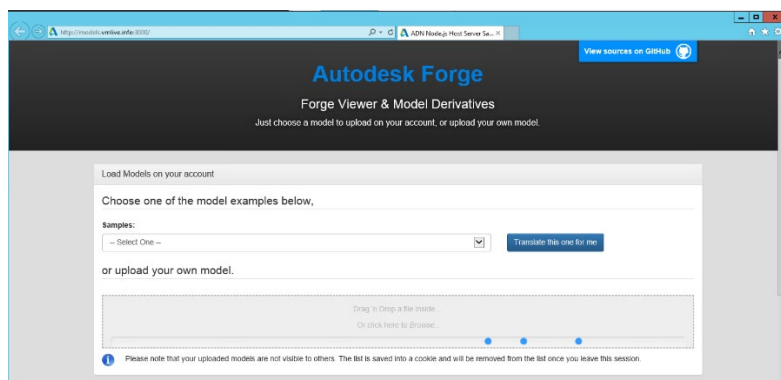
On the remote desk top open file explorer and navigate to the FORGE MODELS folder where you will find the NWDS you upload to FileZilla on your computer.



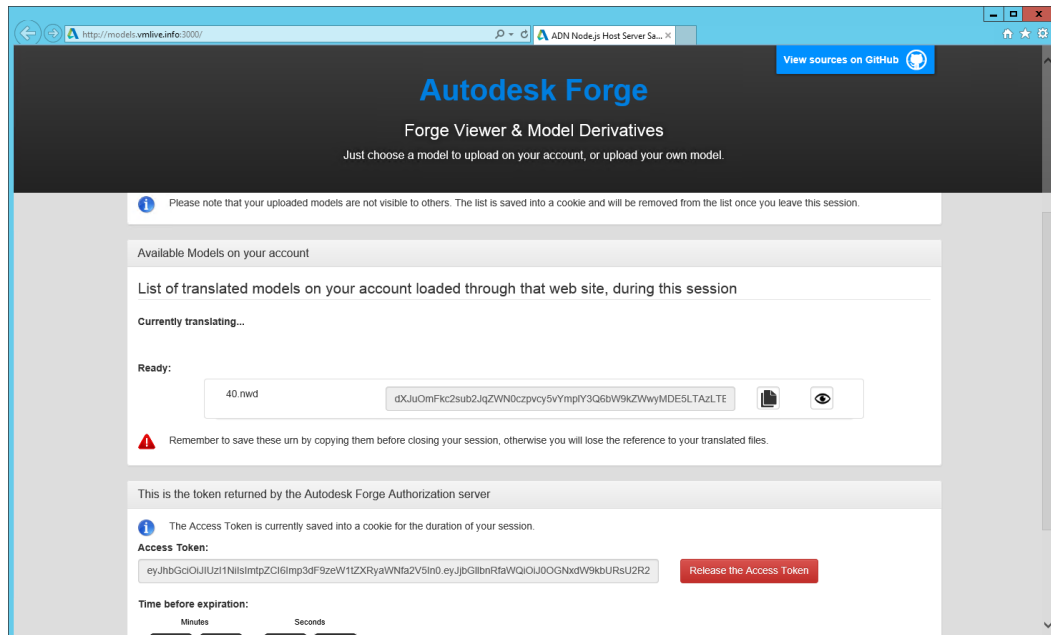
Open internet explorer and this web page (below) will be displayed.



On the virtual desktop there is a notepad document called Forge Keys. Open this and copy the first code into Consumer Key, the second code copy into the Consumer Secret. You will now have a box with blue dots moving along drag and drop your NWD into this box.



Scroll down the page and you will see a READY BOX and inside that will be the name of your NWD and next to that a URN code. Copy the code.



Open up VMLIVE ADMIN page and select NWD-FORGE tab.

Filter the project your working on and then click the + button to add a new line.

Click on EDIT and paste the code in the URN box, tick the two IsJi boxes, put Leak Test in the header and the leak test number in the name box.

Now login to VMLIVE and the open this link in a separate browser
<https://vme.vmlive.net/forge/ji/jiforge.aspx#> and have a quick check of the model.

On Server

Login to Autodesk Forge

Login details in the FORGEKEYS document on the server desk top

Drag the nwd in S:\WWW Route\FORGE MODELS on to the blue dots and let it do its thing.

Click the GET MY ACCESS TOKEN and copy it.

Login into VM Admin and select NWD-FORGE

Filter project

Select edit

Paste the ACCESS TOKEN into the URN

Tick the 2 IsJi boxes

Header = Leak Test

Name = the number of the leak test

Then select update.

Remote Desk Top Access (search for this in tool bar

User Administrator

Password ABZForge2019